



Report

No.: T52410360164TA

Date: JAN 14, 2025

Page 1 of 6

SHENZHEN ESUN INDUSTRIAL CO.,LTD.
15A, MICROSOFT KETONG BUILDING, NO. 55 GAOXINNAN 9TH ROAD, HIGH TECH COMMUNITY,
YUEHAI STREET, NANSHAN DISTRICT, SHENZHEN.

Toxicological Risk Assessment (TRA) Cover Page

The following samples were submitted and identified on behalf of the client as:

TPU-95A FILAMENT

(1 formula and 4 additional colors)

Net Weight : 1000G
Item No. : BLACK, BLUE, RED ,GREY, WHITE
Manufacturer : SHENZHEN ESUN INDUSTRIAL CO.,LTD.
Region of Origin : CHINA
Region of Destination : EUROPE

SGS Ref No. : WHIN2412001069PL03
Sample Information Received : FORMULATION WITH CHEMICAL NAME, CAS NO. AND PERCENTAGE
Order Receiving Date : DEC 26, 2024
Last Information Date : JAN 03, 2025
Assessment Period : DEC 26, 2024 TO JAN 14, 2025

Service Requested

Toxicological Risk Assessment (TRA) for the said product per information provided.

Conclusion

Please refer to *the section "CONCLUSION"*

SGS-CSTC Standards Technical Services Co., Ltd.
Shenzhen Branch Testing Center Hardlines.

Unless otherwise agreed in writing, this document is issued by the Company subject to its General Conditions of Service printed overleaf, available on request or accessible at <http://www.sgs.com/en/Terms-and-Conditions.aspx> and, for electronic format documents, subject to Terms and Conditions for Electronic Documents at <http://www.sgs.com/en/Terms-and-Conditions/Terms-e-Document.aspx>. Attention is drawn to the limitation of liability, indemnification and jurisdiction issues defined therein. Any holder of this document is advised that information contained hereon reflects the Company's findings at the time of its intervention only and within the limits of Client's instructions, if any. The Company's sole responsibility is to its Client and this document does not exonerate parties to a transaction from exercising all their rights and obligations under the transaction documents. This document cannot be reproduced except in full, without prior written approval of the Company. Any unauthorized alteration, forgery or falsification of the content or appearance of this document is unlawful and offenders may be prosecuted to the fullest extent of the law. Unless otherwise stated the results shown in this assessment report refer only to the sample(s) and such sample(s) are retained for 30 days only.

Attention: To check the authenticity of assessment / inspection report & certificate, please contact us at telephone:(86-755) 8307 1443, or email: CN.Doccheck@sgs.com

Room 101-901, Plant 4 & Room 101, Plant 2 & Room 101, Plant 3 & Room 301-501, Plant 3, Jianghao (Bantian) Industrial Plant Area, No.430, Jihua Road, Bantian Community, Bantian Street, Longgang District, Shenzhen, Guangdong, China 518129 www.sgs.com
中国·广东·深圳市龙岗区坂田街道坂田社区吉华路430号江豪(坂田)工业厂区厂房4号 101-901、2号101、3号101、3号301-501 邮编: 518129 t:(86-755) 25328888 sgs.china@sgs.com

Member of the SGS Group (SGS SA)

Sample Photo:

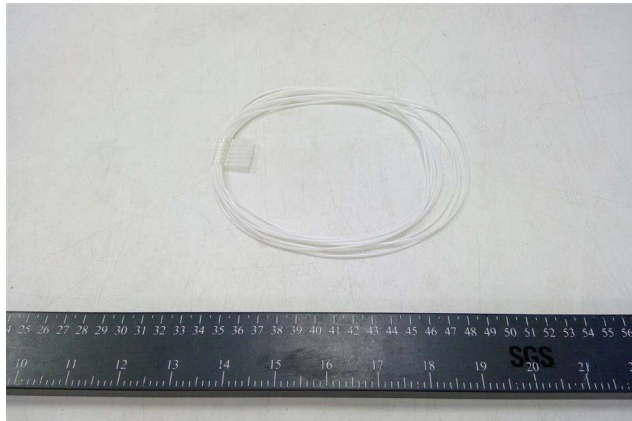
Pic.1



Pic.2



Pic.3



SGS authenticate the photo on original report only



Report

No.: T52410360164TA

Date: JAN 14, 2025

Page 3 of 6

The validity of this review depends on accurate disclosure by both the manufacturer(s) of the components and of the finished products. Best professional capabilities are used in performing this review. If client wishes to use this opinion with any alterations to the submitted formula, SGS-CSTC Standard Technical Services Co., Ltd. Shenzhen Branch- Hardlines or any of its employees will not be held liable for any injury or damage resulting from this product. A review of this assessment should be programmed at regular and frequent intervals (upon reformulation of the components or the finished products or upon any change to health and safety regulations).

Disclaimer ©2024 SGS SA. All rights reserved. The Company's consulting services, including compilation(s) of data and any review of formulation, are based upon the Company's know-how and on publicly available sources available at the time the services were provided. The Company disclaims any and all liability for the accuracy of any such publicly available information or any legal interpretation of such information. The Company provides its services in a consulting capacity only and offers no legal opinion(s) herein. The opinions provided by the Company are not a substitute for professional legal advice and Client should seek legal review to ensure compliance with any applicable laws and regulations.

***** For Further Details, Please Refer to the Following Page(s) *****

Signed for and on behalf of
SGS-CSTC Standards Technical
Services Co., Ltd. Shenzhen Branch Testing Center

Xue Na, Ella
Senior Engineer

Scan to see the report



T52410360164TA
Verification:
check.sgsonline.com.cn

Remark : Since the data and / or information above division line of front page is provided by the applicant, the relevant results or conclusions of this report are only made for these data and / or information, SGS shall not be responsible for the authenticity and integrity of such data and information and the validity of the results and / or conclusions arising therefrom. Assessment results only apply to the information as received.

SGS-CSTC Standards Technical Services Co., Ltd.
Shenzhen Branch Testing Center Hardlines.

Unless otherwise agreed in writing, this document is issued by the Company subject to its General Conditions of Service printed overleaf, available on request or accessible at <http://www.sgs.com/en/Terms-and-Conditions.aspx> and, for electronic format documents, subject to Terms and Conditions for Electronic Documents at <http://www.sgs.com/en/Terms-and-Conditions/Terms-e-Documents.aspx>. Attention is drawn to the limitation of liability, indemnification and jurisdiction issues defined therein. Any holder of this document is advised that information contained hereon reflects the Company's findings at the time of its intervention only and within the limits of Client's instructions, if any. The Company's sole responsibility is to its Client and this document does not exonerate parties to a transaction from exercising all their rights and obligations under the transaction documents. This document cannot be reproduced except in full, without prior written approval of the Company. Any unauthorized alteration, forgery or falsification of the content or appearance of this document is unlawful and offenders may be prosecuted to the fullest extent of the law. Unless otherwise stated the results shown in this assessment report refer only to the sample(s) and such sample(s) are retained for 30 days only.

Attention: To check the authenticity of assessment / inspection report & certificate, please contact us at telephone:(86-755) 8307 1443, or email: CN.Doccheck@sgs.com

Room 101-901, Plant 4 & Room 101, Plant 2 & Room 101, Plant 3 & Room 301-501, Plant 3, Jianghao (Bantian) Industrial Plant Area, No.430, Jihua Road, Bantian Community, Bantian Street, Longgang District, Shenzhen, Guangdong, China 518129
中国·广东·深圳市龙岗区坂田街道坂田社区吉华路430号江豪(坂田)工业厂区厂房4号 101-901, 2号101, 3号101, 3号301-501 邮编: 518129 1 (86-755) 25328888 www.sgsgroup.com.cn
sgs.china@sgs.com

Member of the SGS Group (SGS SA)



Report

No.: T52410360164TA

Date: JAN 14, 2025

Page 4 of 6

TOXICOLOGICAL RISK ASSESSMENT REPORT

The formula of TPU-95A FILAMENT-Black, blue, red, grey, white is reviewed. The product is for EU market and intended for printing as client claims. The net weight of solid (The formula under assessment) is 1000g.

This risk assessment takes account of:

Corrosivity
Skin irritation
Eye irritation
Strong sensitization
Oral toxicity
Inhalation toxicity (if applicable)

According to:

Regulation (EC) No 1272/2008 of the European Parliament and of the Council of 16 December 2008 on classification, labelling and packaging of substances and mixtures and its following amendments, referred as the CLP Regulation

The followings were considered in this toxicological assessment

Ingredient toxicological profile
Potential ingredient interaction
Consumer exposure scenario

Section I. FORMULATION REVIEW

According to the client's needs and to protect business secrecy, detailed formulations are NOT presented in this report, whereas they are recorded in the SGS Archives. In case of medical events, it is the client's responsibility to provide the formulations to a patient's physician, or SGS upon request may furnish relevant medical units, on a confidential basis, information necessary to diagnose or treat cases of exposure without prior written authorization.

The formulation is not classified for human health according to the CLP Regulation. None of the ingredients in the formulation is classified as carcinogenic, mutagenic and toxic to reproduction (CMR) Cat. 1A, 1B or 2 under the CLP Regulation.

No allergenic fragrance has been indicated to be present in the formulation.

SGS-CSTC Standards Technical Services Co., Ltd.
Shenzhen Branch Testing Center Hardlines.

Unless otherwise agreed in writing, this document is issued by the Company subject to its General Conditions of Service printed overleaf, available on request or accessible at <http://www.sgs.com/en/Terms-and-Conditions.aspx> and, for electronic format documents, subject to Terms and Conditions for Electronic Documents at <http://www.sgs.com/en/Terms-and-Conditions/Terms-e-Documents.aspx>. Attention is drawn to the limitation of liability, indemnification and jurisdiction issues defined therein. Any holder of this document is advised that information contained hereon reflects the Company's findings at the time of its intervention only and within the limits of Client's instructions, if any. The Company's sole responsibility is to its Client and this document does not exonerate parties to a transaction from exercising all their rights and obligations under the transaction documents. This document cannot be reproduced except in full, without prior written approval of the Company. Any unauthorized alteration, forgery or falsification of the content or appearance of this document is unlawful and offenders may be prosecuted to the fullest extent of the law. Unless otherwise stated the results shown in this assessment report refer only to the sample(s) and such sample(s) are retained for 30 days only.
Attention: To check the authenticity of assessment / inspection report & certificate, please contact us at telephone:(86-755) 8307 1443, or email: CN.Doccheck@sgs.com

Room 101-901, Plant 4 & Room 101, Plant 2 & Room 101, Plant 3 & Room 301-501, Plant 3, Jianghao (Bantian) Industrial Plant Area, No.430, Jihua Road, Bantian Community, Bantian Street, Longgang District, Shenzhen, Guangdong, China 518129
中国·广东·深圳市龙岗区坂田街道坂田社区吉华路430号江豪(坂田)工业厂区厂房4号 101-901, 2号 101, 3号 101, 3号 301-501 邮编: 518129 1 (86-755) 25328888 www.sgs.com
sgs.china@sgs.com

Member of the SGS Group (SGS SA)

Section II. CONSUMER HEALTH RISK ASSESSMENT

Afore-mentioned formulation has been reviewed for safety at the basis of the following assumptions.

Exposure assessment

The following assumptions have been made for assessment of exposure:

- Product category: TPU-95A filament
- Physical form: solid
- Intended use (suggested use): for printing
- Accessibility: this product will contact with the consumer directly
- Exposure route(s): primarily via dermal contact
- Default body weight: 60 kg
- Target population: adult as client claims

Section III. RISK EVALUATION

This product is unlikely to cause damage to internal organs through skin contact in majority of consumers under normal and reasonably foreseeable conditions of use.

Section IV. CONCLUSION

The formulation is not classified as a Dangerous Mixture as per the human health criteria of the CLP Regulation. Provided the manufacturer's instructions are followed, it is considered that, in the present state of knowledge, the submitted formulation put on the market is unlikely to pose a significant risk to the health of intended consumer under normal and reasonably foreseeable conditions of use.

Recommended Safety Labelling

Not Applicable.

Unless otherwise agreed in writing, this document is issued by the Company subject to its General Conditions of Service printed overleaf, available on request or accessible at <http://www.sgs.com/en/Terms-and-Conditions.aspx> and, for electronic format documents, subject to Terms and Conditions for Electronic Documents at <http://www.sgs.com/en/Terms-and-Conditions/Terms-e-Documents.aspx>. Attention is drawn to the limitation of liability, indemnification and jurisdiction issues defined therein. Any holder of this document is advised that information contained hereon reflects the Company's findings at the time of its intervention only and within the limits of Client's instructions, if any. The Company's sole responsibility is to its Client and this document does not exonerate parties to a transaction from exercising all their rights and obligations under the transaction documents. This document cannot be reproduced except in full, without prior written approval of the Company. Any unauthorized alteration, forgery or falsification of the content or appearance of this document is unlawful and offenders may be prosecuted to the fullest extent of the law. Unless otherwise stated the results shown in this assessment report refer only to the sample(s) and such sample(s) are retained for 30 days only.

Attention: To check the authenticity of assessment / inspection report & certificate, please contact us at telephone:(86-755) 8307 1443, or email: CN.Doccheck@sgs.com

Room 101-901, Plant 4 & Room 101, Plant 2 & Room 101, Plant 3 & Room 301-501, Plant 3, Jianghao (Bantian) Industrial Plant Area, No.430, Jihua Road, Bantian Community, Bantian Street, Longgang District, Shenzhen, Guangdong, China 518129 www.sgs.com
 中国·广东·深圳市龙岗区坂田街道坂田社区吉华路430号江豪(坂田)工业厂区厂房4号 101-901、2号101、3号301-501 邮编: 518129 1(86-755) 25328888 sgs.china@sgs.com

Member of the SGS Group (SGS SA)

The TRA assessment is valid under the following conditions:

1. Potential physical, mechanical, electrical and microbiological risks of the product have not been assessed and evaluated.
2. The formulation, description and other supporting documents of the product were submitted and identified by/on behalf of the client, assumed to be valid and accurate.
3. It was assumed that either the ingredients, or the finished product contain no contaminants or residues that cause toxicity to a consumer who may be exposed. All polymers should be well-cured if they are present in the formulation.
4. The risk evaluation can solely be applied to and appropriate for, the product described above under the stated conditions. Modification of any components of the finished product, such as net weight, adjustment of ingredient concentrations, should therefore require re-evaluation.
5. Heavy metal contents in the product were not assessed and evaluated.
6. This product has been assessed for compliance only with the regulation(s) specified herein.
7. If there is an adverse reaction from using this formulation then the undersigned should be informed so that the formulation can be further reviewed.
8. This product has been evaluated for human health only, environmental concern/ ecotoxicity is not assessed in this report.
9. The assessment is performed by in-house method, taking reference of available consumer product exposure database, literature data to the best of knowledge by the time of assessment.



HONGJING XU MB, MPH,
Diplomate, American Board of Toxicology,
European Registered Toxicologist,
Certified Toxicologist of CSOT
Certified Cosmetic Safety Assessor

***** End of Report *****

SGS-CSTC Standards Technical Services Co., Ltd.
Shenzhen Branch Testing Center Hardlines.

Unless otherwise agreed in writing, this document is issued by the Company subject to its General Conditions of Service printed overleaf, available on request or accessible at <http://www.sgs.com/en/Terms-and-Conditions.aspx> and, for electronic format documents, subject to Terms and Conditions for Electronic Documents at <http://www.sgs.com/en/Terms-and-Conditions/Terms-e-Documents.aspx>. Attention is drawn to the limitation of liability, indemnification and jurisdiction issues defined therein. Any holder of this document is advised that information contained hereon reflects the Company's findings at the time of its intervention only and within the limits of Client's instructions, if any. The Company's sole responsibility is to its Client and this document does not exonerate parties to a transaction from exercising all their rights and obligations under the transaction documents. This document cannot be reproduced except in full, without prior written approval of the Company. Any unauthorized alteration, forgery or falsification of the content or appearance of this document is unlawful and offenders may be prosecuted to the fullest extent of the law. Unless otherwise stated the results shown in this assessment report refer only to the sample(s) and such sample(s) are retained for 30 days only.

Attention: To check the authenticity of assessment / inspection report & certificate, please contact us at telephone:(86-755) 8307 1443, or email: CN.Doccheck@sgs.com

Room 101-901, Plant 4 & Room 101, Plant 2 & Room 101, Plant 3 & Room 301-501, Plant 3, Jianghao (Bantian) Industrial Plant Area, No.430, Jihua Road, Bantian Community, Bantian Street, Longgang District, Shenzhen, Guangdong, China 518129 www.sgs.com
中国·广东·深圳市龙岗区坂田街道坂田社区吉华路430号江豪(坂田)工业厂区厂房4号 101-901, 2号101, 3号101, 3号301-501 邮编: 518129 1 (86-755) 25328888 sgs.china@sgs.com

Member of the SGS Group (SGS SA)